

# Hamster Heaven

assembly instructions

**SAVIC**<sup>®</sup>  
pets' favourite



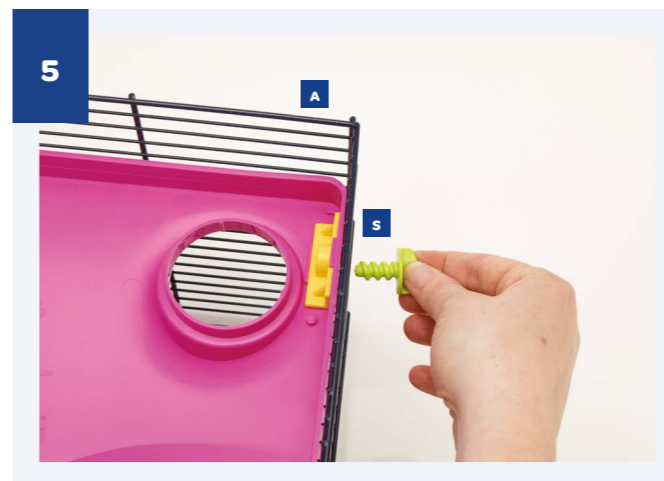
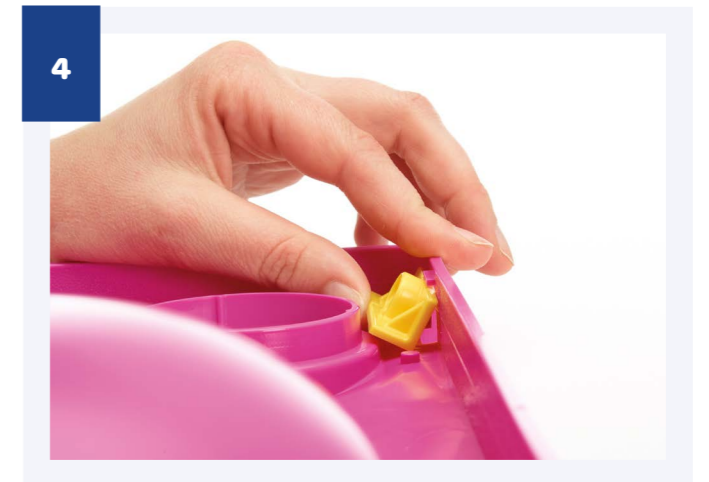
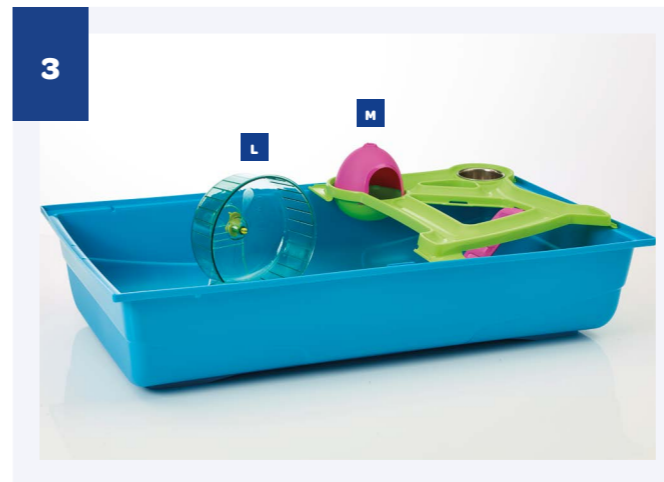
Follow us on    
#petslovesavic



## Check list

Before you start assembling your cage, please check if you have all the components.  
If any part is missing or damaged, do not use your cage.

- |                                |   |
|--------------------------------|---|
| <b>A</b> 1 metal cage top part | <b>K</b> 2 homes                        |
| <b>B</b> 1 plastic tray        | <b>L</b> 1 toilet with scoop and litter |
| <b>C</b> 1 platform            | <b>M</b> 1 exercise wheel with stand    |
| <b>D</b> 1 platform            | <b>N</b> 1 drinking bottle with holder  |
| <b>E</b> 1 ladder              | <b>O</b> 1 hamster penthouse            |
| <b>F</b> 1 tobogan             | <b>P</b> 10 elbow parts                 |
| <b>G</b> 2 protection rings    | <b>Q</b> 4 large tunnel parts           |
| <b>H</b> 12 connection rings   | <b>R</b> 2 small tunnel parts           |
| <b>I</b> 3 squares             | <b>S</b> 3 screws                       |
| <b>J</b> 2 feeding bowls       | <b>T</b> 2 handles                      |





6B



7



10A



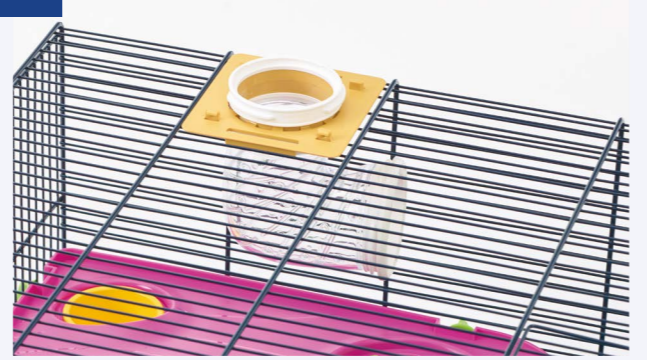
10B



8A



8B



11



12A



8C



9



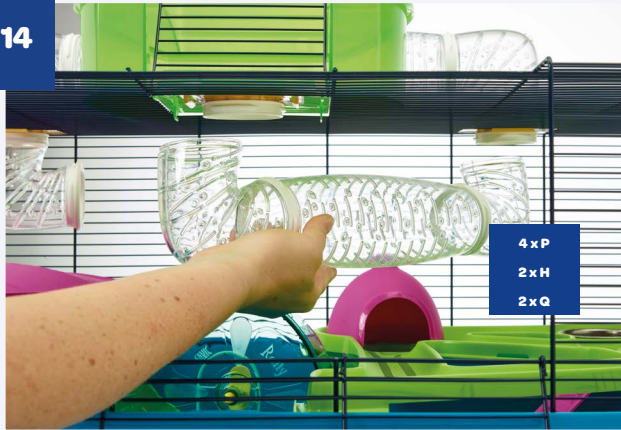
12B



13



14



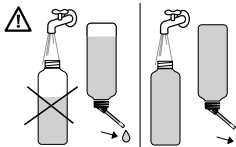
15



16

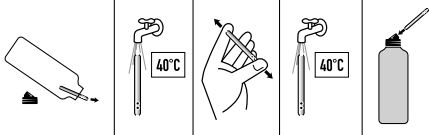


17



### ATTENTION

To avoid leakage,  
always fill bottle 100%.



Rinse spout with hot water  
before first use.

[www.savic.be](http://www.savic.be)

Ringlaan 10 • B-8501 Heule • Belgium

Tel. +32 56 35 33 45 • Fax +32 56 35 77 30

info@savic.be

Doc.nr.: 931204