

Hamster Plaza

collapsible small animal home

Assembly instructions for Hamster Plaza

Richtlijnen voor de montage van Hamster Plaza

Instructions pour le montage de la Hamster Plaza

Aufbau-Anleitung des Hamster Plaza

Instrucciones de montaje de la Hamster Plaza

инструкция по сборке Hamster Plaza

100 x 50 x 50 cm



www.savic.be

Ringlaan 10 • B-8501 Heule • Belgium

Tel. +32 56 35 33 45 • Fax +32 56 35 77 30

info@savic.be

Doc.nr.: 931920

SAVIC[®]
pets' favourite

Savic would like to thank you for your purchase and confidence in our Hamster Plaza cage.

We can assure you that you have acquired a high quality small animal cage.

Please take a few minutes to read these instructions fully to ensure a perfect flawless assembly of your Hamster Plaza cage.

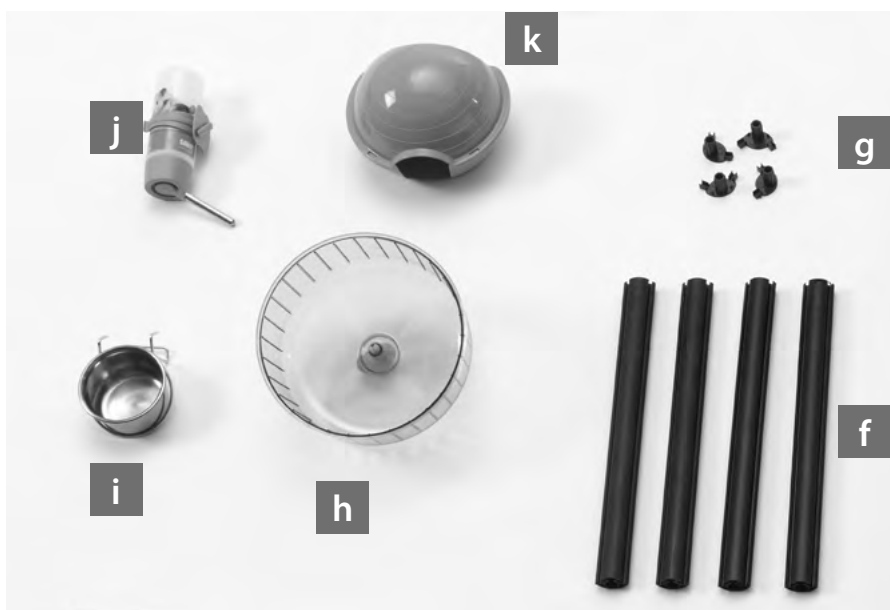
Check that you have all the contents as per the list on the following page. If any component parts are missing or damaged, do not use your cage.

More information and instruction video on www.savic.be



The Hamster Plaza box contains:

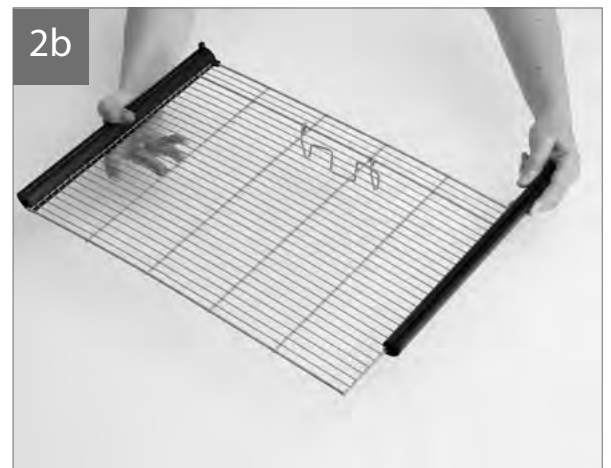
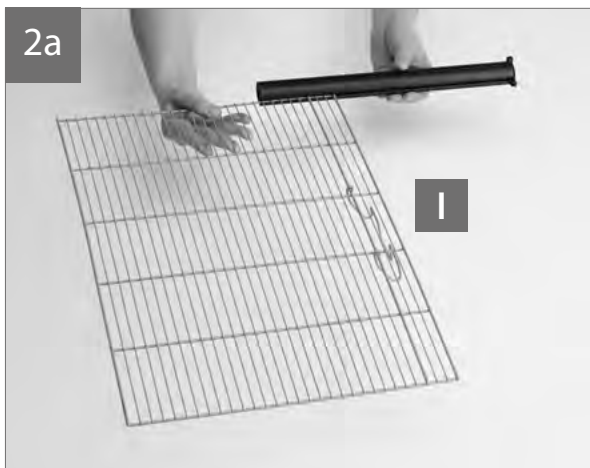
- 1 plastic bottom part (a)
- 1 platform (b)
- 4 fixings for platform (c + d)
- 1 ladder (e)
- 4 side profiles (f)
- 4 corner pieces (g)
- 1 wheel (h)
- 1 stainless steel feeding bowl (i)
- 1 drinking bottle + holder (j)
- 1 small animal house (k)
- 2 side panels (l)
- 1 front panel with door (m)
- 1 back panel (n)
- 1 roof panel (o)







Attach the 4 corner pieces (g) on one side of each of the 4 profiles (f).



Slide one side panel (l) into two profiles (f).



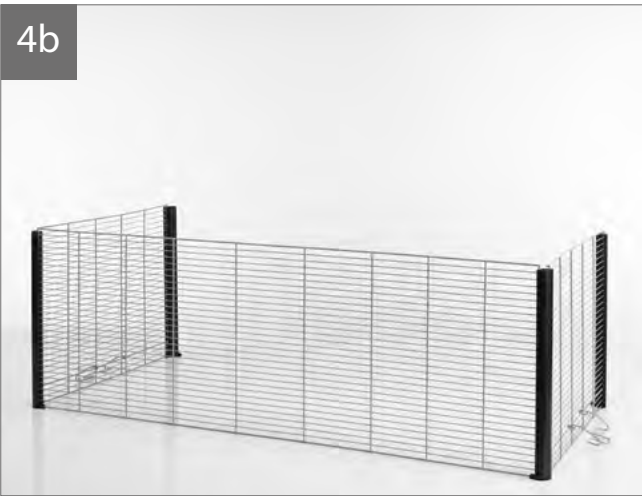
Slide the back panel (n) in the third profile.
Make sure that the vertical wires of the back panel and the closure of the side panel are facing outwards.

4a



Slide the second side panel (I) into the final profile. Make sure the closure is facing outwards.

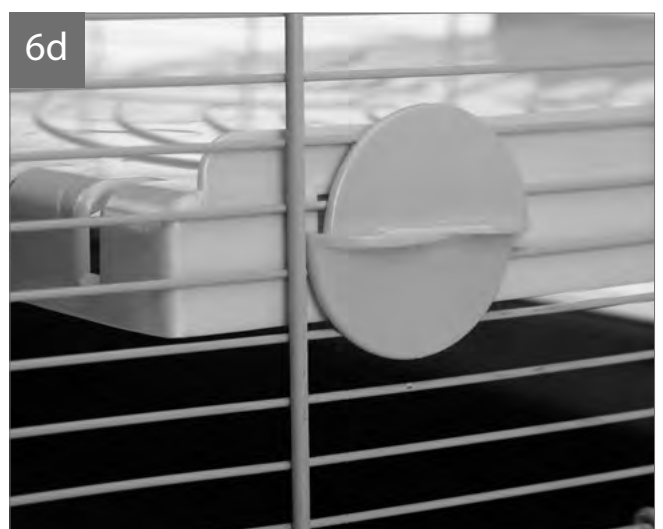
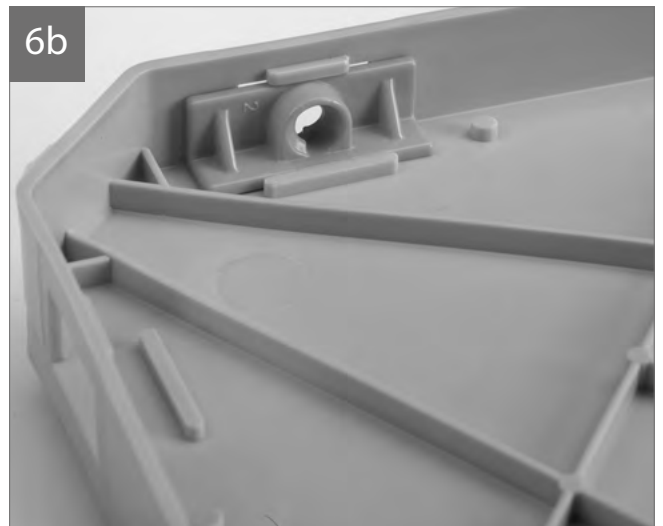
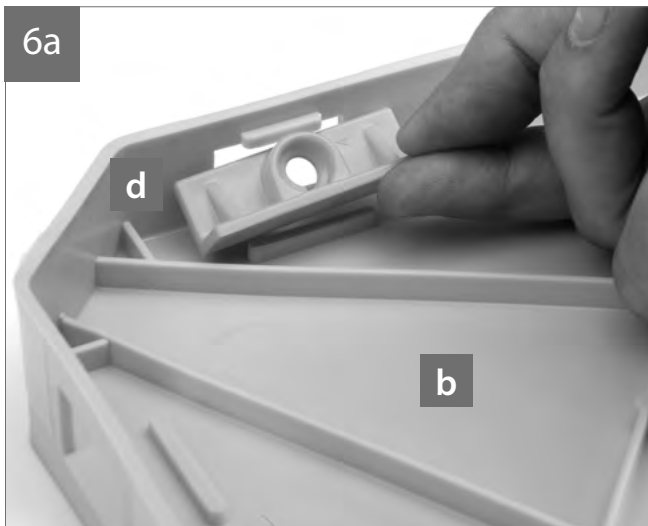
4b



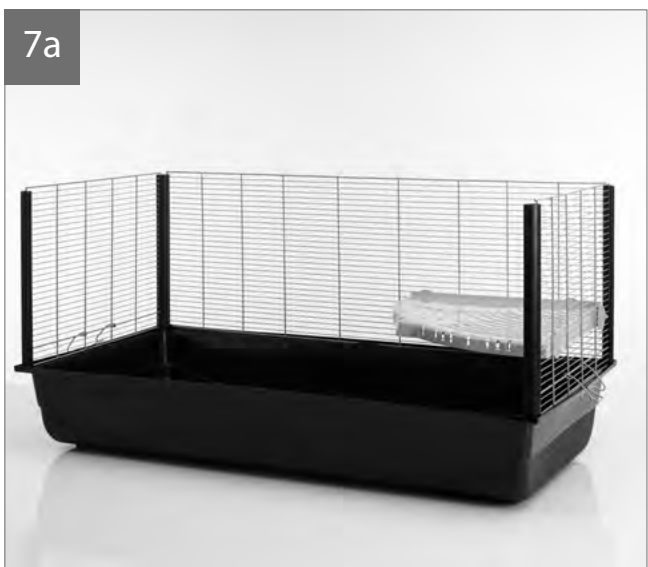
5



Put the cage part on the bottom tray as shown in the picture.



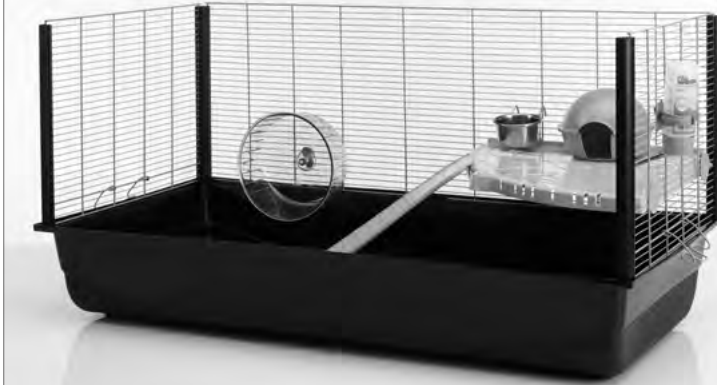
Insert 4 x d in the platform (b). Place the platform in the corner of the side and back panel. Do not tighten the screws (c) too strongly.



The platform has now been installed. Attach the ladder (e) to the platform.

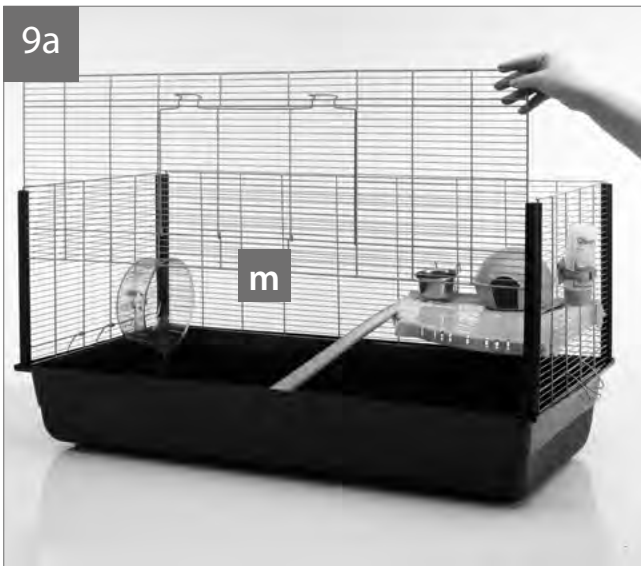
8

h+i+k+j

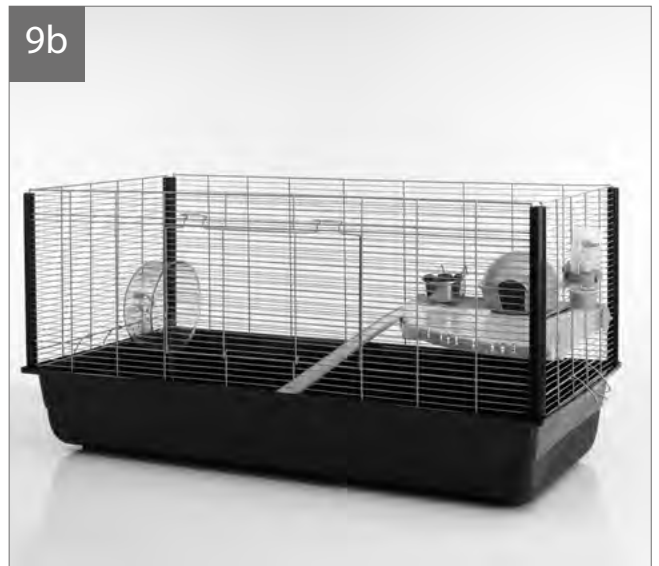


Assemble the remaining accessories: wheel (h), feeding bowl (i), small animal house (k) and drinking bottle (j).

9a



9b



Slide the front panel with door (m) into the profiles.

10a

o



10b

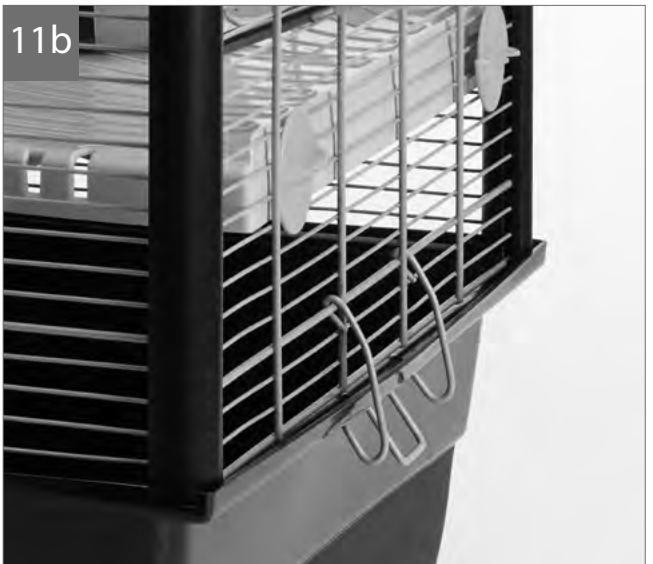


Place the roof panel (o) on top.
Make sure that the thick horizontal wires of the front, back and side panels are well assembled in the roof panel. (see detail).

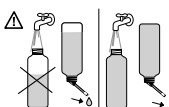
11a



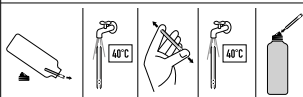
11b



Finally, fix the closures of the side panels well to the bottom. Your cage is now ready to be used.



ATTENTION
To avoid leakage,
always fill bottle 100%.



Rince spout with hot water
before first use.

SAVIC[®]
pets' favourite