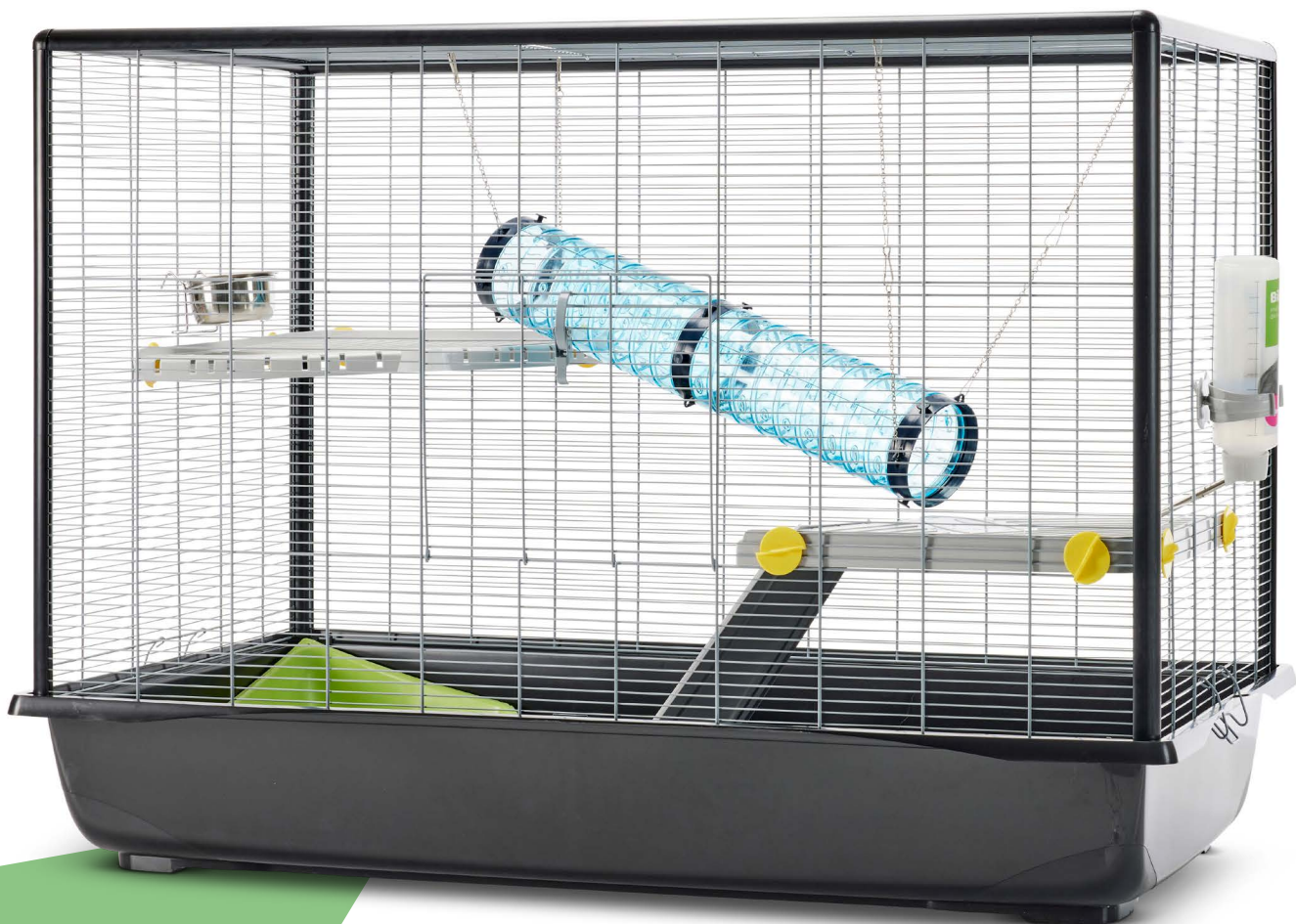


Zeno 4 knock down

SAVIC®
pets' favourite

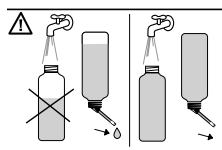
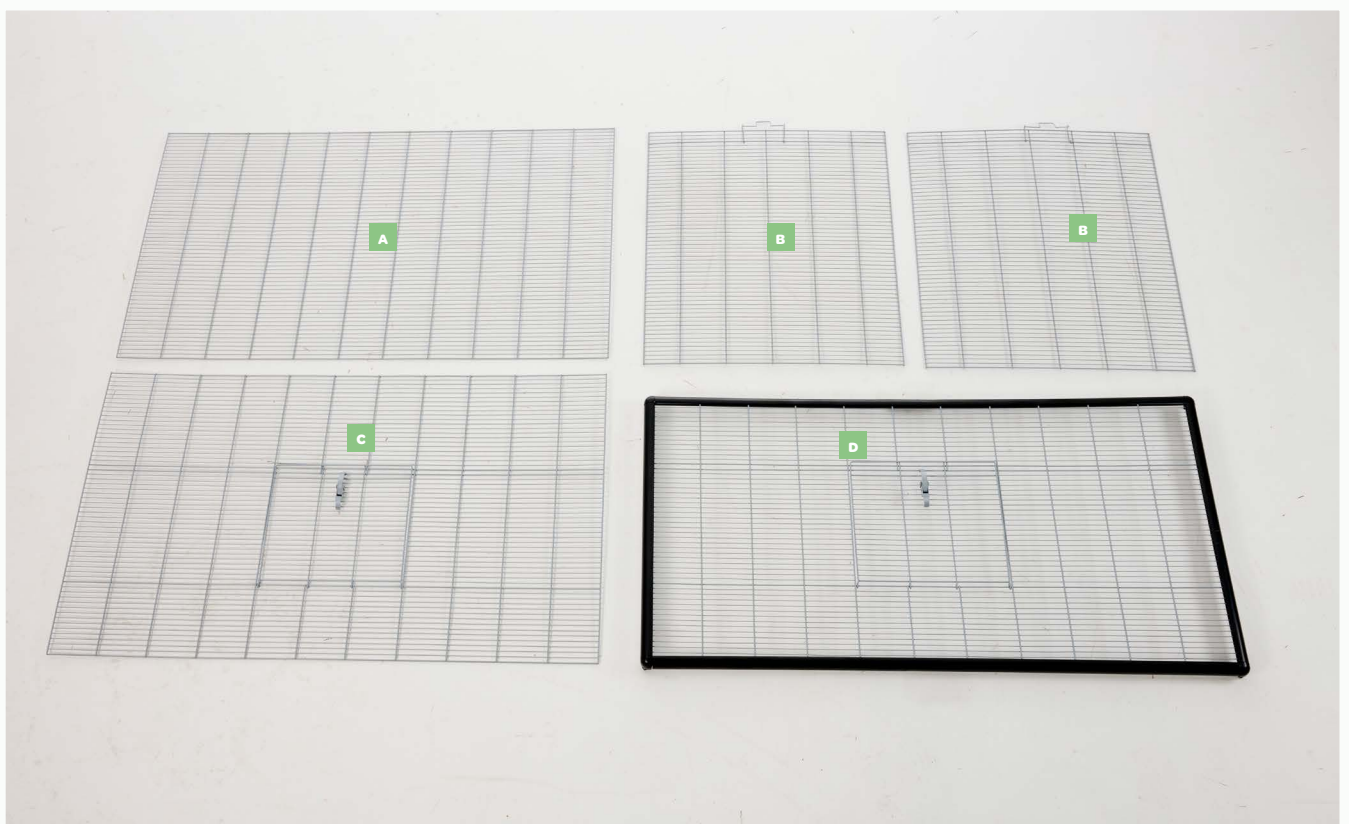
assembly instructions



Check list

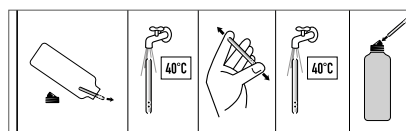
Before you start assembling your cage, please check if you have all the components. If any part is missing or damaged, do not use your cage.

- A** 1 back panel
- B** 2 side panels
- C** 1 front panel with door
- D** 1 roof panel with door
- E** 1 corner toilet
- F** 4 vertical profiles
- G** 4 corner pieces
- H** 1 bottom
- I** 2 play tubes with hooks
- J** 1 drinking bottle 500 ml with holder
- K** 1 stainless steel feeding bowl with hook
- L** 1 ladder
- M** 8 fixings for platform
- N** 2 platforoms



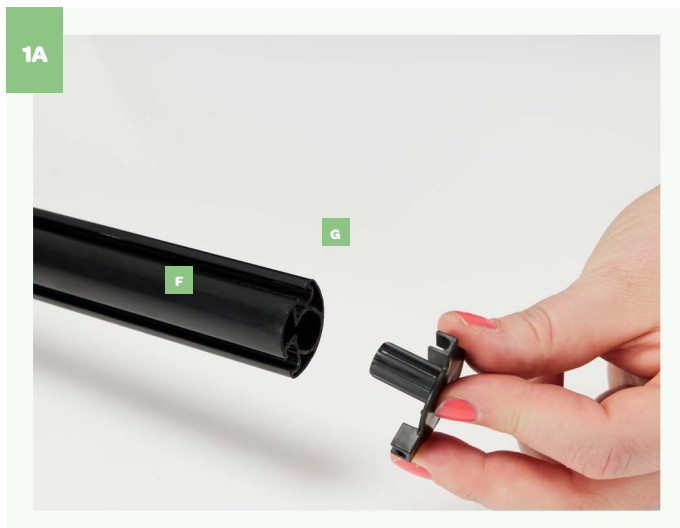
ATTENTION

To avoid leakage, always fill bottle 100%.
Om lekken te vermijden, vul de fles altijd 100%.
Afin d'éviter des fuites, toujours remplir la bouteille 100%.
Um Tropfen zu vermeiden, Tränke immer 100% füllen.
Para evitar gotas, siempre llenar la botella 100%.

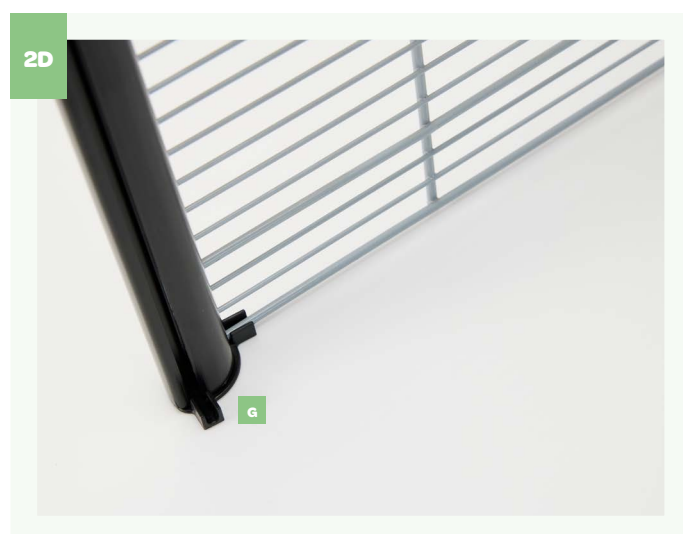
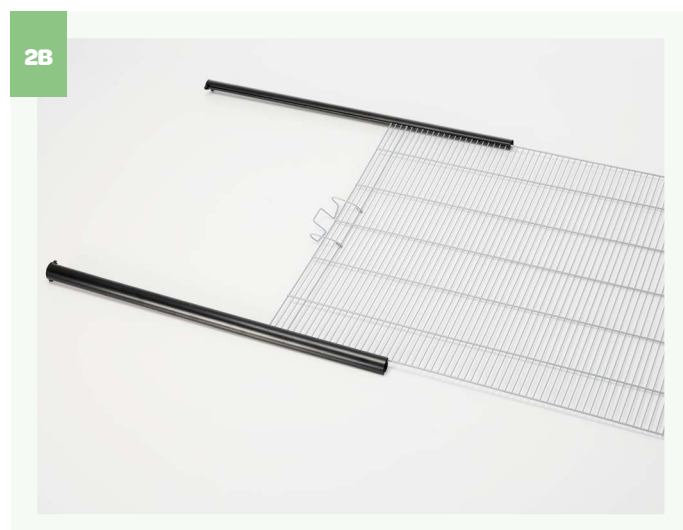


Rince spout with hot water before first use.
Voor eerste gebruik, buisje reinigen met warm water.
Avant premier usage, rincer la pipette à l'eau chaude.
Vor erster Verwendung, Röhrchen spülen mit heissem Wasser.
Antes de usarlo, limpiar el tubito con agua caliente.





Attach on all 4 profiles (F) the 4 corner pieces (G).

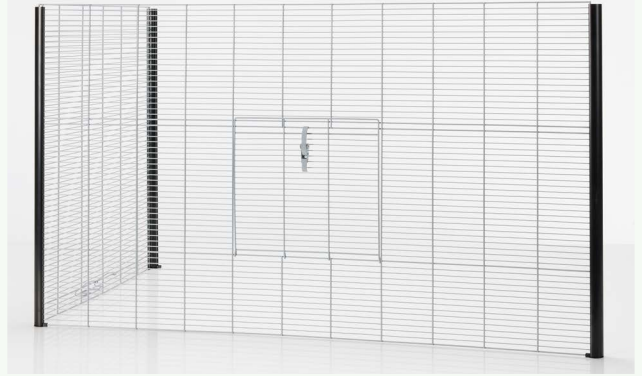


Slide 1 side panel (B) in the vertical profiles (F).
Make sure that the closure is facing outwards and the panel is well placed in the corner piece (G).

3A



3B



Slide the front panel with hooks (C) in the vertical profiles (F). Make sure that the door is facing outwards.

4A



4B



Slide the remaining side panel (B) into the profiles. Make sure that the hook of the side panel is facing outwards. And finally, slide the back panel into the profiles. Make sure that the vertical wires are facing outwards.

5



Install the 2 platforms (N) by using the fixtures (M) as shown.



6A

O

K



6B



6C



6D



Place the cage part on the bottom, make sure that it is well placed, as shown in pictures
Attach the hooks of the side panels onto the bottom.

11B



Install the roof panel (D). Place the corner toilet (E) in one of the bottom corners and attach the ladder (L) to the lowest platform. Finally, attach the feeding bowl (K) to the cage.

2A



2B



3A



3C



Assemble the play tube, as shown in the pictures,, and attach it to the roof panel.

Finally, drinking bottle (J) to the cage and close the doors.

Your cage is now ready for use.



www.savic.be

Ringlaan 10 • B-8501 Heule • Belgium

Tel. +32 56 35 33 45 • Fax +32 56 35 77 30

info@savic.be

Doc.nr.: 931254

SAVIC®
pets' favourite